



www.petpro.com.au

Professional • Diverse • Different

The Pet Professionals

Anthony J. Viganò (Paterson) & Associates.
Veterinary Surgeons

Summer 2007

The Australian Cattle Dog: Road Test



Inside this Issue

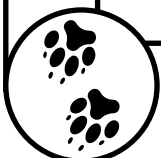
Road Test:	
The Australian Cattle Dog	Page 2
Puppy Plus Package	Page 3
Cats Corner, Cat Scratch Disease	Page 4
Adopt-a-cat Program	Page 5
The Love of a Dog	Page 6
New Faces At Swanbourne	Page 7
Kids Corner	Page 8



Visit our website: www.petpro.com.au
E-mail us at: tony@petpro.com.au

Swanbourne Veterinary Centre

2 Devon Road Swanbourne 6010	Monday to Friday: 7.30am to 7.00pm
Tel: (08) 9384 2644	Saturday: 8.00am to 4.00pm
Fax: (08) 9383 2846	Sunday: 8.00am to 1.00pm
	Public Holidays: 8.00am to 1.00pm





Road Test: The Australian Cattle Dog



This authoritative, tough, hard working dog is also known as the Australian Heeler, the Hall's Heeler, the Queensland Heeler and the Blue Heeler. Possessing legendary stamina the dog was developed by earlier settlers in Australia's outback to herd cattle over vast distances in the heat and dust of this vast continent. Simply the quintessential cattle dog.

HISTORY:

The early settlers arrived with Smithfields and Old Smooth Collies from Europe but soon found these dogs did not have the stamina to deal with the harsh Australian climate.

They experimented with cross breeding these dogs and came up with a mix of the smooth, blue merle (or speckled) collie from Scotland and the Australian Dingo.

To this mix was added the Australian Kelpie (a breed derived from the Border Collie), the Dalmation and the Bull Terrier.

The result was a dog with huge stamina, tough, and with excellent herding instincts, able to sustain the harsh conditions of the Australian outback.

APPEARANCE:

The Australian Cattle Dog is a sturdy, compact, well muscled dog which is both powerful and agile.

A broad head, wide set pointed, pricked ears and a short double coat (almost weather resistant) gives the dogs a solid appearance and colours are blue speckled (merle) or red speckled. The blue speckled is with or without blue or tan markings on the head with tan points, whilst the red speckle variety should be evenly speckled all over, but may have darker markings on the head.

As newborns they are white in colour though the adult colour can be seen in their pups.

They are between 43-50cm in height and weigh between 15-20kg, living 12-15 years.

CHARACTERISTICS:

A very authoritative and focused, tough and hard working dog, this is a working and herding animal and as such is not well suited to a life in the backyard.

They are highly intelligent and become bored easily so that serious behavioural problems may develop if they are not properly socialized and obedience trained from an early age.

Loyal, protective and alert they make excellent guard dogs and if properly trained are brave and trustworthy though they tend to bond to one person and that person needs to have a strong and consistent approach with the dog.

They are often suspicious with strangers and other dogs and can be dog aggressive as they have a high dominance level.

WHO SHOULD OWN ONE:

Not an ideal dog for families as they need considerable exercise, and apartment living is not recommended. They are fine with children they know but can be difficult and reserved with other children and strangers generally.

Tending to be a one person dog this can also be a drawback in the family situation.

Their short coat is low maintenance just needing occasional brushing though they are average shedders.

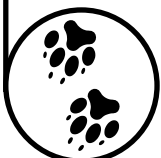
Exercise is paramount as they can become destructive and difficult to handle if left to their own devices so be prepared to put time into their development. They tend to nip at the heels of playing children and so if contemplating a purchase ensure you avoid bloodlines devoted to producing working dogs. Having said all this they are easy to train and do make excellent pets and guard dogs in the right hands and are ideal for our climate.

VETERINARY PROBLEMS:

Generally very hardy though they can suffer from hip dysplasia (an early onset, hereditary, arthritic condition of the hips), progressive retinal atrophy and deafness (possibly inherited from the dalmation in their lineage?). Therefore as always, make sure you research the bloodlines before buying.

In summary these are an ideal dog for someone who lives the outdoor life and is prepared to spend time with the dog training and bonding with it.

Having a tendency to be dog aggressive and with basic herding instincts this breed needs considerable socializing and obedience training if you are considering one as a family pet. Having said that they are ideal for Perth's hot climate and are a loyal, low maintenance breed with the stamina to easily cope with a young vigorous family.





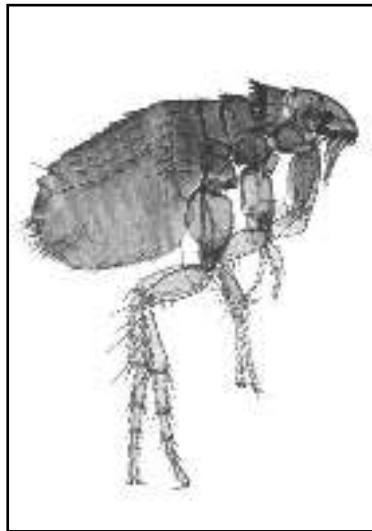
FLEAS....the new products are so effective that we often forget these age old pests!

Cat Scratch Disease in Humans....a new understanding

Cat Scratch Disease (CSD, also known as Cat Scratch Fever) is an uncommon disease transmitted from cats to humans via scratches and bites. Until recently, little was known about this important disease, with the causative organism not long identified as a bacterium called *Bartonella henselae*.

Typically, CSD is a benign and self-limiting disease in people causing (but not limited to) lymph node enlargement, low grade fever, joint and muscle pain, weight loss, conjunctivitis and skin lesions at the entry site (bite wound).

Cats are generally asymptomatic but may rarely present with ocular or neurological signs, fever, and gum inflammation. Due to the vague and non-specific nature of signs, most infections are likely to remain undiagnosed.



Recent work has confirmed one of the most interesting and important discoveries concerning CSD-the fact that the cat flea, a very

common external parasite of cats worldwide, plays an important role in the transmission of not only CSD but also other bacterial infections.

When fleas feed they ingest the bacteria present in the blood stream of infected cats (which are invariably symptom free). The organism is eventually passed in the fleas' faeces and when the cat scratches or grooms itself, the organism becomes established on its claws



and teeth enabling the transmission of the disease to humans when they are bitten or scratched by a "carrier" cat. Transmission may also occur via contamination of a bite or scratch wound with flea faeces containing the bacteria.

Unfortunately there is currently no readily accessible test to determine the presence of *Bartonella* infections in healthy cats. It is, however, critical to stress that humans are unlikely to acquire infectious diseases from healthy, adult, parasite free, indoor cats.

Given that many of our cats spend much of their time outdoors, the asymptomatic nature of the disease in cats and the role of the cat flea in disease transmission, the best means of preventing the transmission of the disease is year round flea control.

As cat fleas readily pass to dogs, all animals living within the same environment should be treated.

This is best achieved by the monthly administration of a flea control product to your pets.

Be sure to ask us about the best product suited to your pet(s) when next you visit the practice.





The Puppy Plus Package:

The most important thing you can do for your new puppy is to properly socialise him/her particularly in view of the stringent new application of the Dog Act.

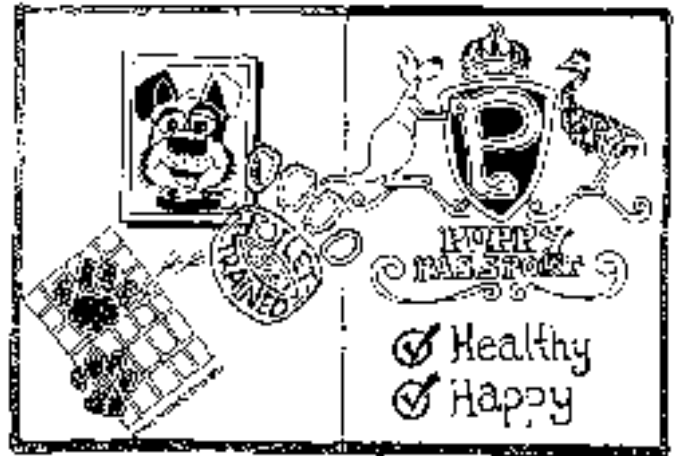
Legislation however is only a small part of the story and the benefits you will obtain from a well mannered dog in later life are far more important.

Instead of a stressful situation whenever your dog interacts with other people and animals on those wind down walks in the park at the end of the day, it will become the pleasurable experience it should be.

Your heart rate is said to go down when you pat a dog but is this always the case if your best friend is hell bent on tearing out the throat of everyone he/she sees on that walk?

The answer is simple. Puppy Class is the place to start when your new companion is malleable and receptive to new experiences of the pleasurable kind and a good start here sets him/her up for life. The next stage however is as important and so we have positioned John Connell's Dog Obedience classes to follow on and compliment puppy class.

After 6 weeks on the beach front at Swanbourne (what could be more enjoyable, even on these brisk Sunday mornings than an hour spent with like-minded dog lovers under the guidance of big John) you and your dog should be set up with a real understanding that will set the pattern for the rest of your relationship (maybe the next 15 years).



For our part we are keen to be part of this and so offer you the third part of the equation - an affordable package which includes a discount on the sterilisation of your new pet.

Therefore if you have just acquired a new puppy and are about to embark on the road to responsible pet ownership by attending the Swanbourne Puppy Class, ask about our package of puppy class/dog obedience class and discounted sterilisation. This plus the Petpro card which gives you 10% on all your over the counter products (wormers, flea products, and heart wormers) plus dog food make owning a dog much more affordable.

Ask Dot at reception next time you visit the Swanbourne Centre.



Petpro Veterinary Centre

Swanbourne

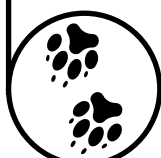
Puppy Plus Package



This voucher entitles the bearer to:
 10% discount on puppy class (4 class block), PUPi management (4 class block), dog obedience (6 class block) and sterilization package (within 6 months of issue).
**Not to be used in conjunction with other offers*

Authorised: _____

Expiry March 31st 2007





Adopt-a-Cat Program:

Now that Summer has arrived so have the kittens!!

As many clients will know we play an active role in helping the Cat Haven place dumped and unwanted kittens.

Many thanks to those clients who have given one of our orphans a home to date.

If you are planning to share your life and your home with a new kitten don't fail to ring us before you take the plunge as we generally have a litter on display and one in waiting most of the time during the warmer months.

Cats come into season depending on day length and in Perth whilst it is not uncommon to see kittens in Winter the vast majority are born during the longer and warmer days of Spring and Summer.

There is no obligation of course and it seems we always manage to place these appealing little balls of fluff, but if you are in the market or are considering one as a gift all we ask is that you ensure the recipient of your gift is aware and willing and in the position to look after a kitten. Give it plenty of thought before you commit



yourself and talk it over with the family first.

Once that has been established then we are pleased to offer these orphans at 50% of the cost of sterilization, vaccination, deworming and microchipping.

As of immediately the Weekend and Public Holiday opening times will be as follows:

SATURDAY:

Office Hours: 8am until 4pm

Consulting Hours: 8am until 4pm

SUNDAY:

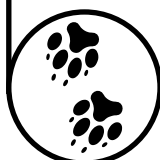
Office Hours: 8am until 1pm

Consulting Hours: 8am until 1pm

PUBLIC HOLIDAYS:

Office Hours: 8am until 1pm

Consulting Hours: 8am until 1pm





THE LOVE OF A DOG....

totally unqualified, no matter what you have done!

Much of the appeal of dog ownership is the loyalty of dogs to their owners. All dog owners recognize the joy in their dog's expression when they return home after even a short absence and at the end of a long hard day, often spent dealing with treacherous humans, it is food for the soul to experience that familiar and enduring welcome that your pooch comes up with day in and day out. There are however stories where a dog's devotion to its owner has been remarkable.

During the French Revolution many of the aristocracy, under the threat of death by the guillotine, took their dogs to prison with them. Not only did these little dogs provide companionship and improve the morale of their owners but they were also used as a means of smuggling messages to and from family members on the outside. In some cases a pet dog was the only "member" of the family permitted visits. Marie Antoinette owned a Pug, Thisbee, who was refused entry to prison but is reported to have kept a vigil for his mistress at the gate.

Perhaps the best known story of canine loyalty is the story of Greyfriars Bobby, a small shaggy terrier owned by a farmer in Scotland.

When the farmer died in 1858 Bobby followed the funeral and stood, whining softly, as the coffin was lowered into the grave. As the mourners turned away Bobby did not follow, but lay there with his eyes fixed mournfully on the grave. He remained there all night and the next day was discovered, wet and cold, by the sexton who drove him away. That night, when doing his rounds of the cemetery, he found the little shaggy dog had returned and although soaked to the skin and



shivering was huddled against the same grave. The following morning one of the grave diggers recognized the dog as belonging to the farmer who was buried there.

The story of the little dog was told in the bar of the local inn and patrons arranged shelter for the dog and provisions of table scraps. The story captured the imagination of the public and people crowded to the churchyard to see Greyfriars Bobby.

Bobby learned to go to the Inn at noon every day to be fed a plate full of table scraps but would return to the churchyard to take up his vigil.

Bobby was declared a stray and was to be impounded when the Innkeeper guaranteed his yearly licence fee and accepted responsibility for the dog. The Mayor of Edinburgh presented Bobby with an ornate collar which had been purchased from money donated by the public and many artists sketched and painted Bobby.

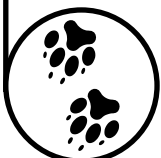
Visit our new **revised web site**
for up to date information about everything at Petpro

www.petpro.com.au

- › Information
- › offers
- › all about us
- › breed road tests
- › links to other sites
- › and much more.



UPDATED EVERY DAY





New Faces at Swanbourne

Dr Innes Chester:



It is with much pleasure that we welcome Innes Chester to the full time veterinary staff here at Swanbourne.

Innes is the only daughter of Drs Graeme and Ziggy Chester who are long term friends of the practice. Graeme is well known as an ophthalmic surgeon in the human field

whilst Ziggy has been associated with the practice as a veterinary ophthalmologist for nearly 20 years.

Innes started her schooling in the UK whilst Ziggy was completing her training in ophthalmology, and then

subsequently attended St Hildas completing year 12 in 2001.

She then attended the Murdoch School of Veterinary Science (2002-2006) graduating at the end of 2006 with honours.

She graduates with a special interest in ophthalmology (of course!), surgery and avian medicine whilst her outside interests include horse riding, cross country running and swimming.

There is no doubt she will be a successful and popular veterinarian with her pedigree but she is very much her own person and I feel sure will be an asset to the practice.

Look out for her in 2007.

Terri Wyr:



Many of you visiting the practice on weekends will have already met our new veterinary nurse/receptionist Terri Wyr.

Terri is a Queenslander and went to school in Rockhampton. After she left

school she attended the University of Qld where she graduated with a Bachelor of Applied Science degree in Animal Studies (equine) in 2001. She worked in retail after graduation and then met and married her husband who is in the Army, hence her relocation here in Perth.

On arriving in Perth Terri completed a veterinary

nursing qualification at the Applied Vocational Training Center and it was during her practical work carried out as part of her course here at Swanbourne that we met her, and the rest is history.

Her interests include her two dogs and cat at home, travelling and horse racing. She is also a keen follower of rugby and is a member of the Western Force.

A convert to the relaxed WA lifestyle, Terri and her husband may well become permanent fixtures in Perth, which will be a bonus for us as I feel sure you will enjoy her helpful manner and bubbly personality.

Welcome to the Swanbourne team Terri we look forward to a long association.

Ellie Drynan: (And one regular face who leaves us for a while.....)

Over the last 14 months many clients will have met Dr Ellie Drynan. Ellie is a graduate from Sydney University and together with husband Ryan who is also a vet, working at Murdoch University, they arrived in Perth a little over 12 months ago. It has been a pleasure to have Ellie in the practice, initially as a part timer, then full time whilst Deanne had her baby. Now it is Ellie's turn as she and Ryan are expecting their first baby in

January. So, sadly, we say goodbye to Ellie for 6 months as she leaves in early December on maternity leave. Be sure to watch our web page for news of the birth early next year and for her return to the practice in 6 months time. We are sad to see you leave us even if only for 6 months Ellie. Love and best wishes from all the team here at Swanbourne."



Kids★ Corner

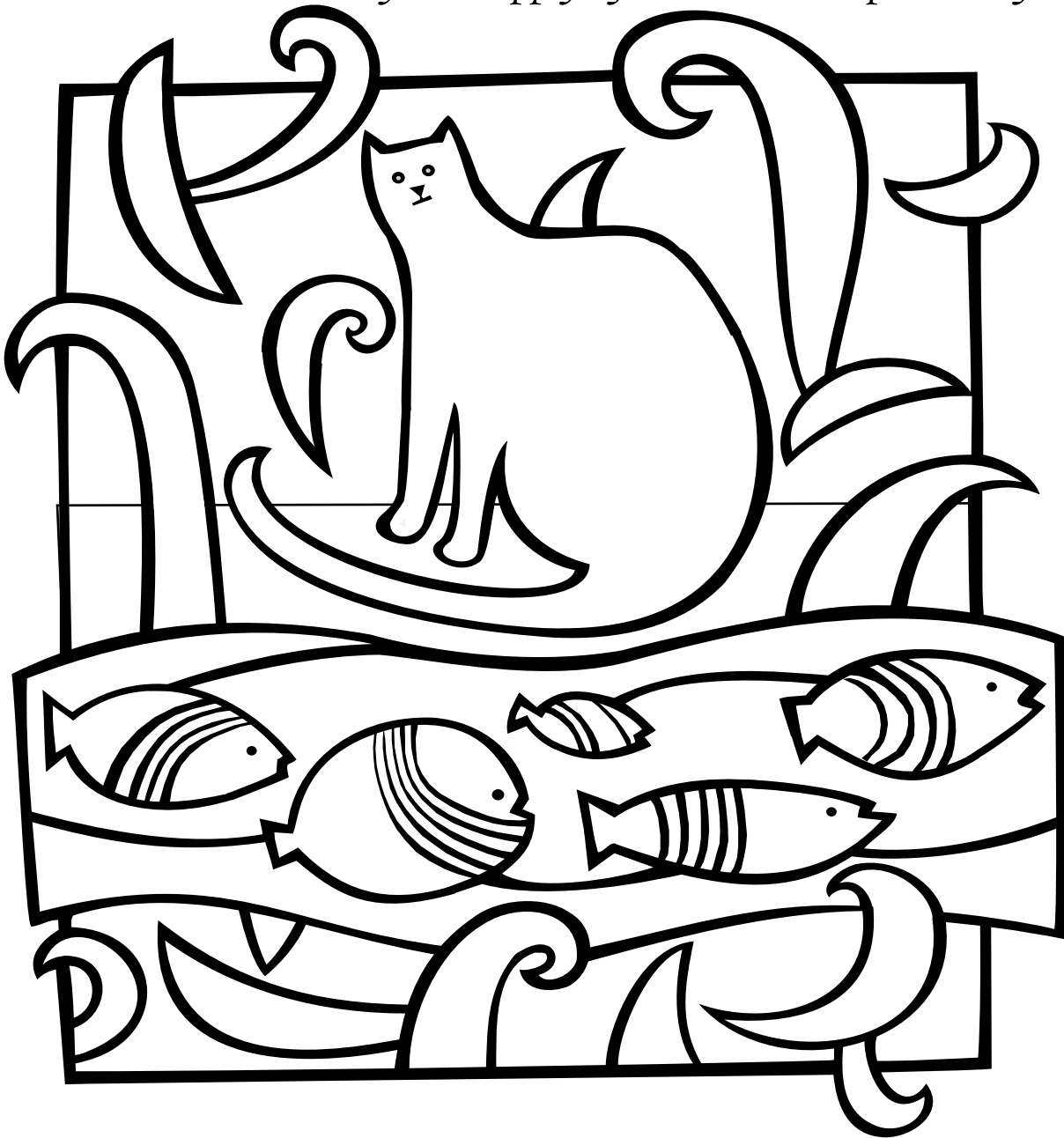


SWANBOURNE VETERINARY CENTRE



Professional • Diverse • Different

Children up to 12 years are invited to enter our colouring-in competition. Please post or return your entry to Swanbourne Veterinary Centre by 31st March 2007 for your chance to win...*A years supply of Flea Control products for your pet!*



advantage
The Fast Flea Control
Proudly sponsored
by Bayer Australia

Name: Age:

Address:

.....

.....

Telephone No:

Good Luck!

